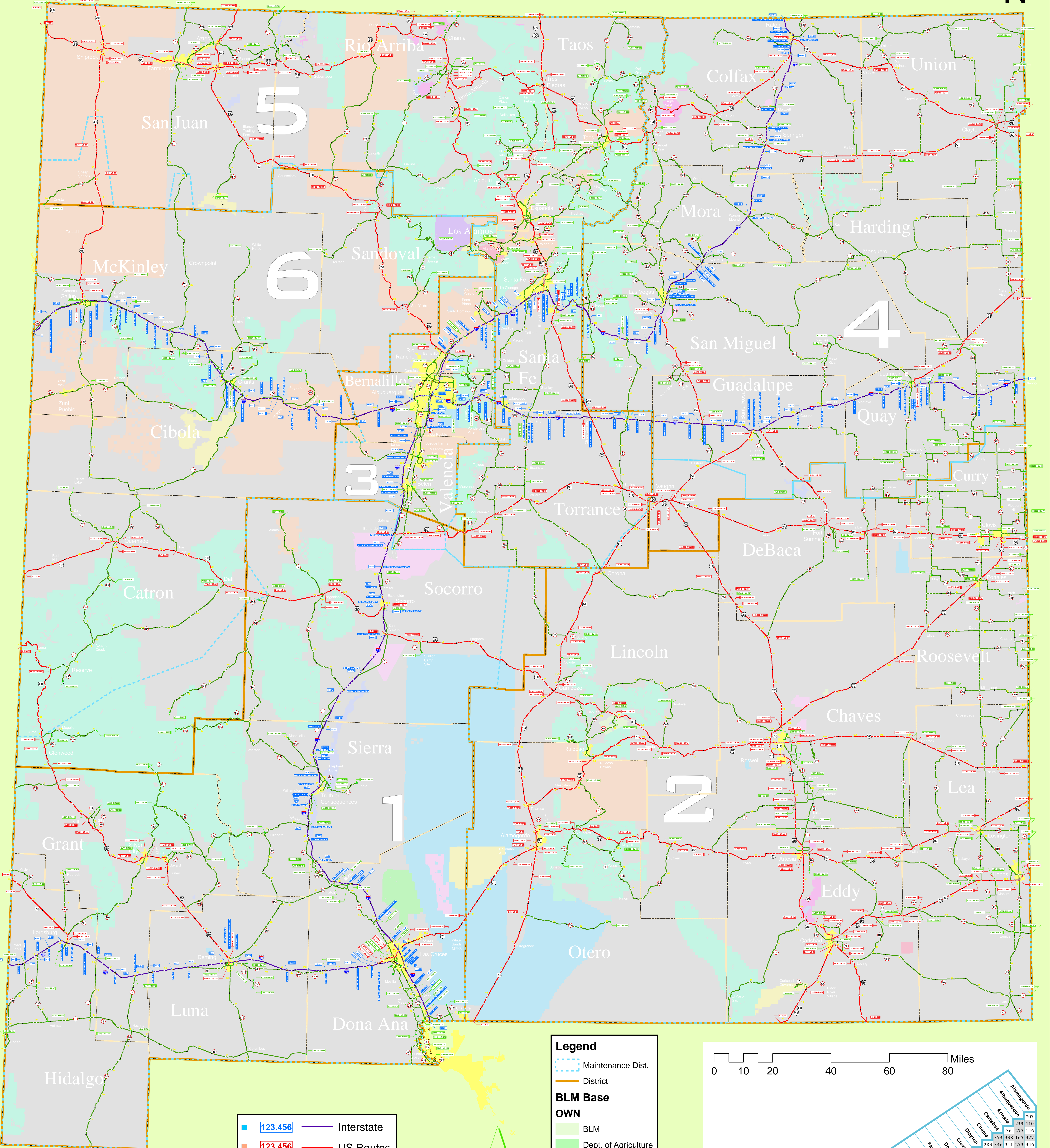
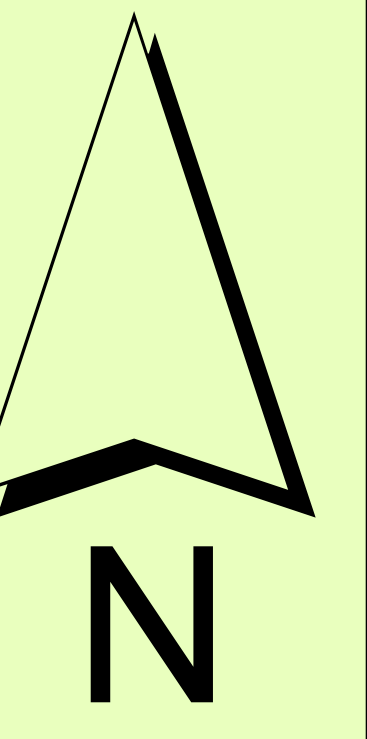


NMDOT 2007 STATEWIDE MILEPOST/POINT MAP



- 123.456 Interstate
- 123.456 US Routes
- 123.456 (EOR) NM Routes
- 10th Mile Marker
- 5th Mile Marker
- ◆ Interchange

- Legend**
- Maintenance Dist.
 - District
- BLM Base**
- BLM
 - Dept. of Agriculture
 - Dept. of Defense
 - Dept. of Energy
 - Forest
 - Fish-Wildlife
 - Native American
 - Nat. Park
 - State Game Fish
 - State Park
 - Valles Caldera

0 10 20 40 60 80 Miles

Albuquerque	207
Alamogordo	239 110
Artesia	36 275 146
Carlsbad	374 338 165 327
Catron	283 346 311 273 346
Chama	168 319 178 158 19 227
Chavez	354 473 398 267 237 233 127
Cibola	415 401 376 113 457 421 182 389
Crowley	122 309 357 411 235 413 377 138 327
De Baca	453 497 314 128 296 414 69 77 315 187
Dona Ana	255 339 405 59 295 414 388 208 178 223 68
Eddy	307 285 261 263 356 168 150 170 268 232 123 239
Grant	405 119 374 296 418 60 414 533 447 327 297 282 187
Hidalgo	575 98 316 342 231 193 326 246 228 100 302 266 93 255
Lea	254 395 176 276 109 365 409 335 19 187 327 159 131 227 208
Lincoln	253 161 506 106 413 362 362 309 457 234 83 216 374 338 224 345
Luna	81 279 102 447 114 388 348 303 250 398 260 148 157 374 338 165 327
Mora	371 430 385 299 143 329 211 410 187 309 152 377 468 371 370 534 206 263
San Juan	204 298 298 91 226 304 192 185 116 337 381 241 110 271 298 76 40 199 117
San Miguel	330 297 226 297 99 403 462 388 331 44 361 112 367 256 378 53 407 500 403 320 290 238 180
Santa Fe	161 169 136 118 165 129 242 301 256 170 205 200 146 281 193 259 156 248 339 242 241 205 77 134
Santa Rosa	206 367 141 70 275 262 335 36 95 254 66 411 78 352 363 267 214 362 246 162 121 338 302 129 291
Torrance	278 72 90 241 208 170 217 189 314 373 308 242 134 272 75 324 265 331 85 320 411 314 282 267 149 137
Valencia	300 184 228 389 59 166 219 160 357 203 177 91 200 422 106 303 200 311 355 362 83 111 272 236 200 173 235
Yuma	96 204 167 132 293 37 97 123 95 261 203 206 124 131 326 100 207 211 242 286 266 116 207 203 171 135 104 139

Note: not all terminus may be shown.
G:\projects\milepost_maps\SW_V9_2_ELEV_RB.mxd